

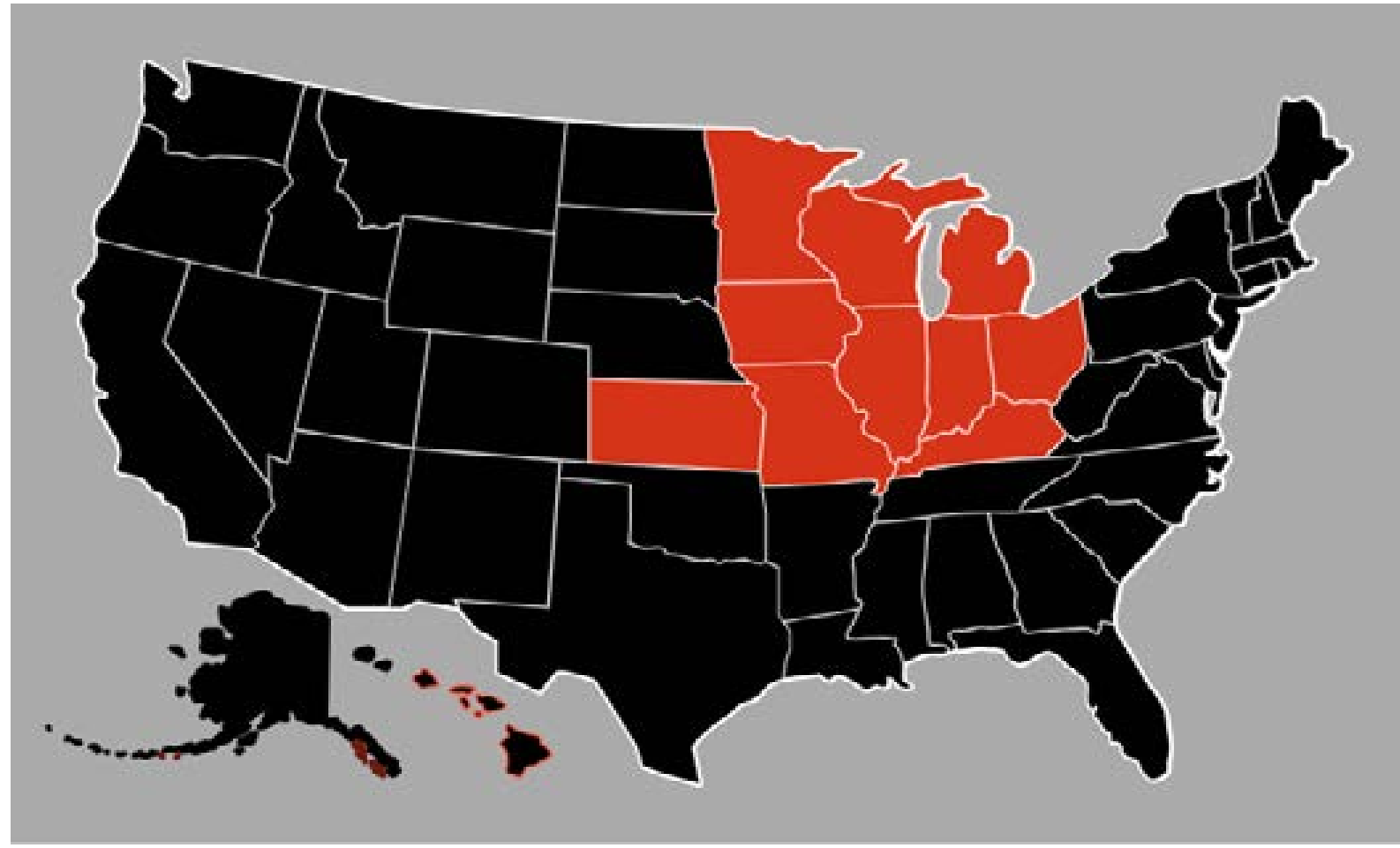
Midwest



Antwaun Banks

“The key is to work for the excellence of human nature, for the excellent future and destiny of human beings on this planet. When you work for that, you are working in accord with what G-d’s PURPOSE for you being on this earth.....”

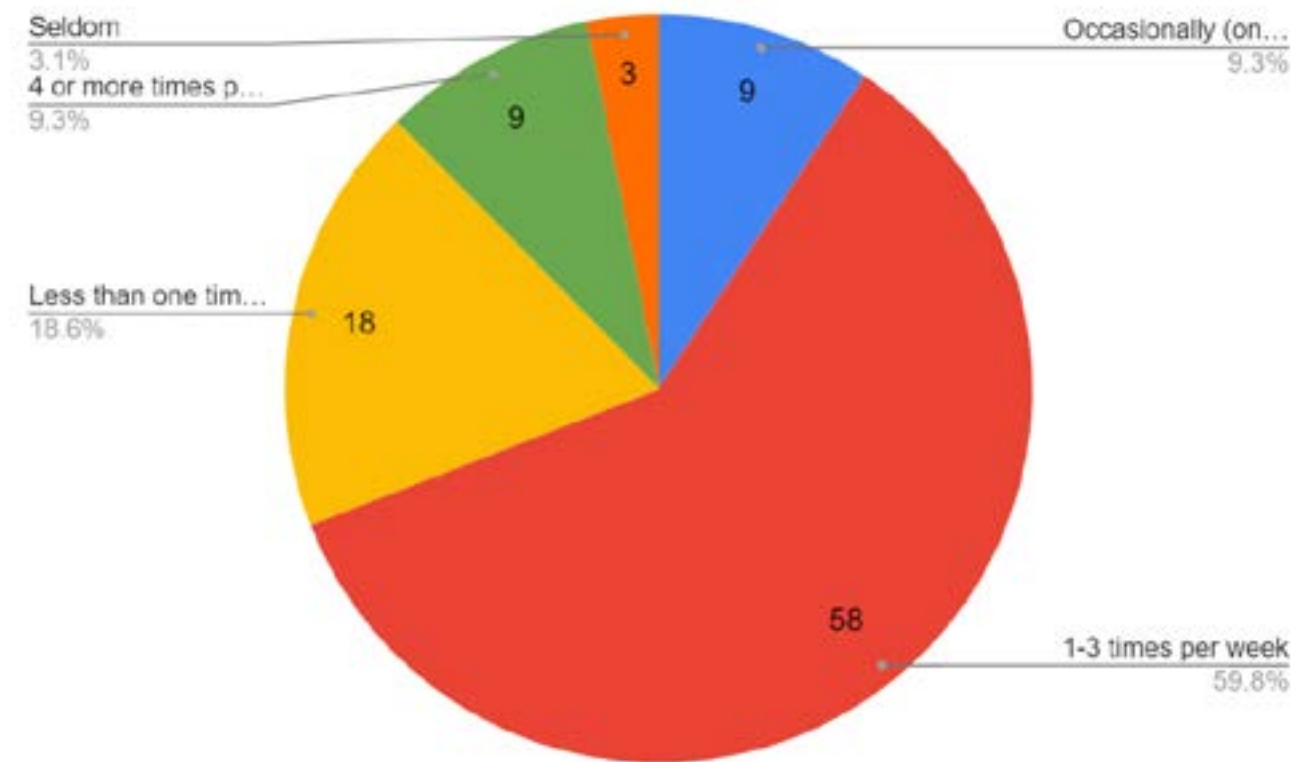
(IWDM: Thoughts for Searchers)



Midwest

Illinois, Indiana, Kansas, Kentucky, Iowa, Ohio, Michigan, Minnesota, Missouri, Wisconsin

How often do you attend your local Masjid or Islamic Center?



Midwest Collective Takeaway: Strengths

“Establishing an independent school system (Muhammad Schools of America and the Muslim Teachers College); (4) Collective Purchasing Conference (CPC) or collective economics;”

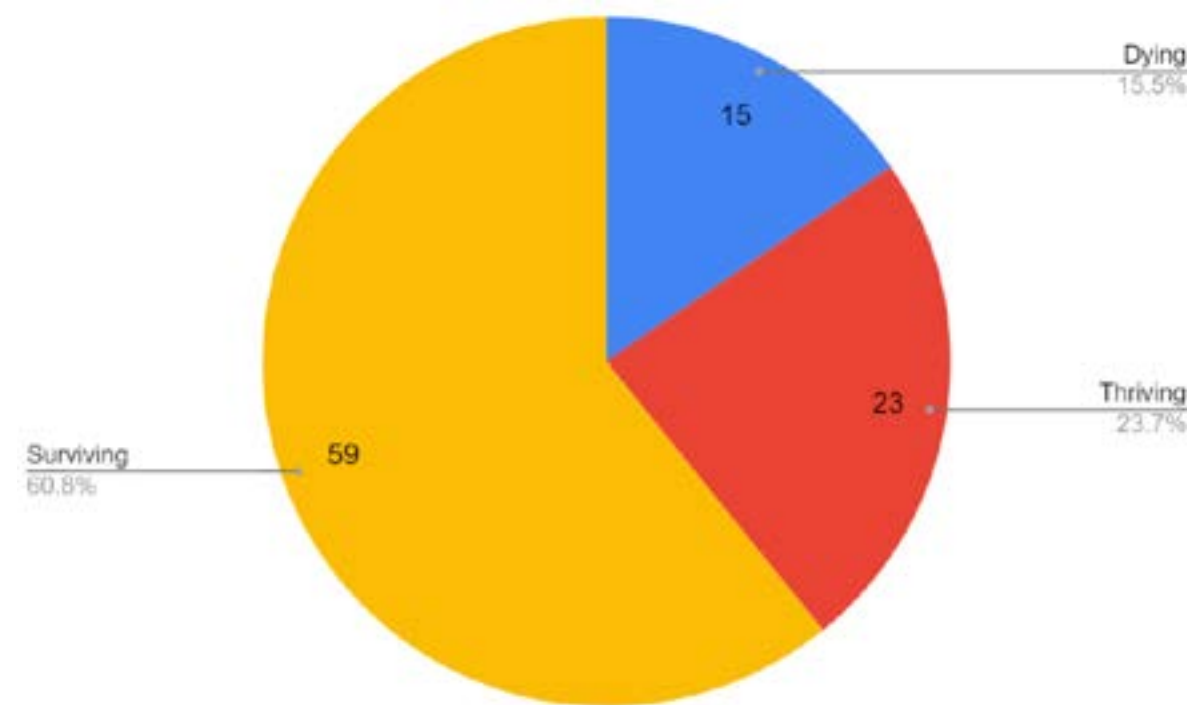
IWDM’s 9-POINT PLAN

Collective Takeaways: Areas of Growth

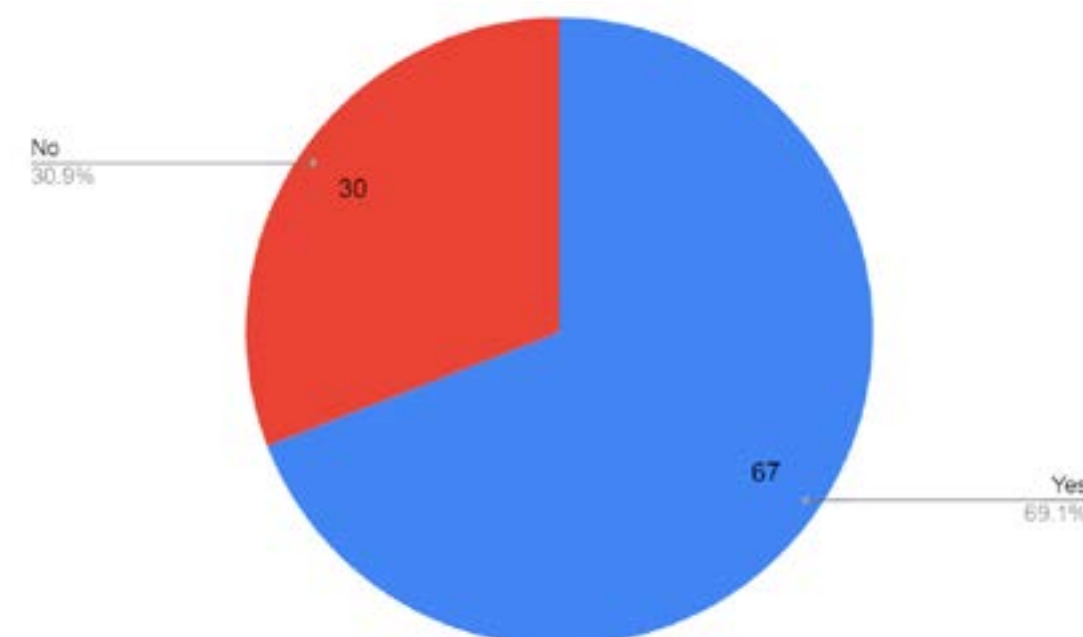
“Establishing programs for young members of the community.” (Focus on youth development and engagement)

IWMM’s 9 POINT PLAN

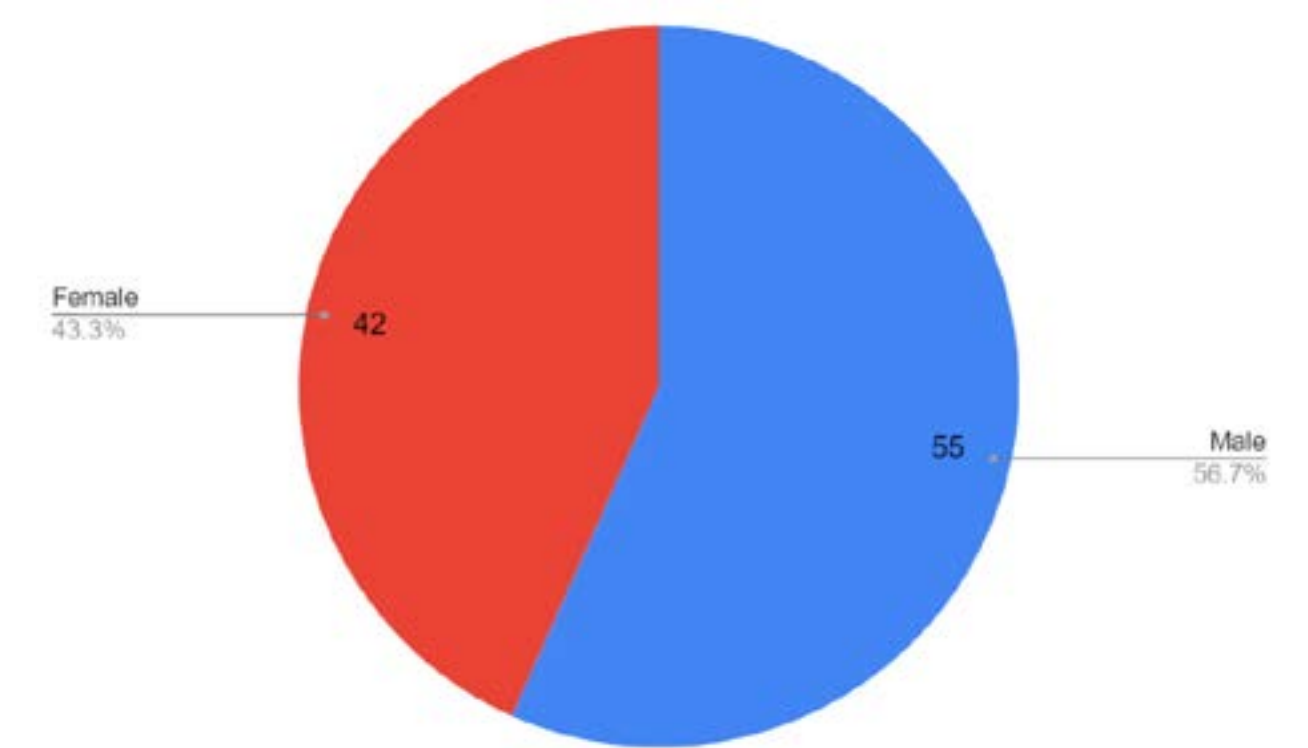
Which word best describes your local Masjid or Islamic Center?



Does your local Masjid or Islamic Center offer programs and/or services that impact the larger community in which you are located?



What is your gender?



Recurring Themes in Data:

Education

Community Engagement

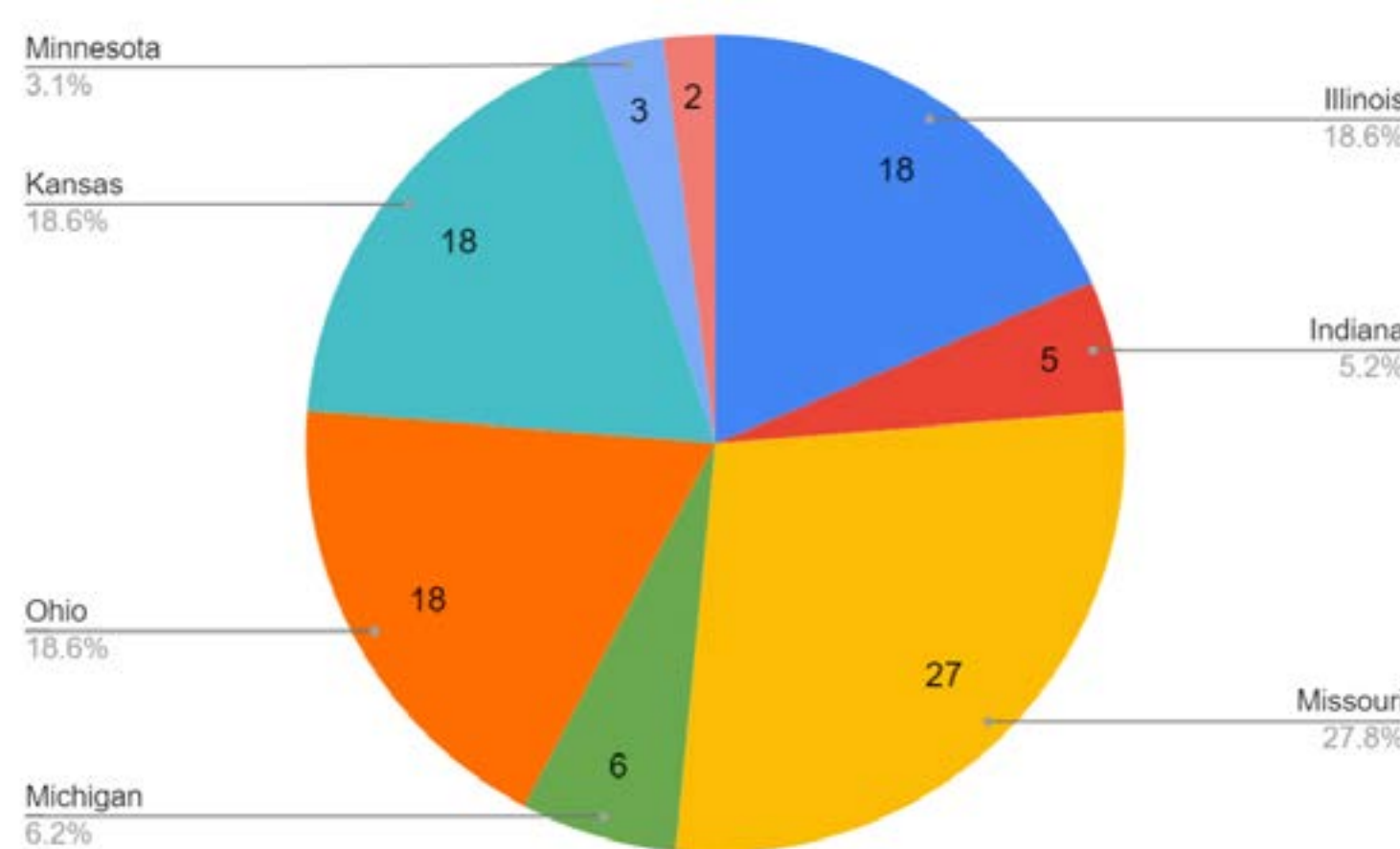
Leadership Development

Youth Engagement

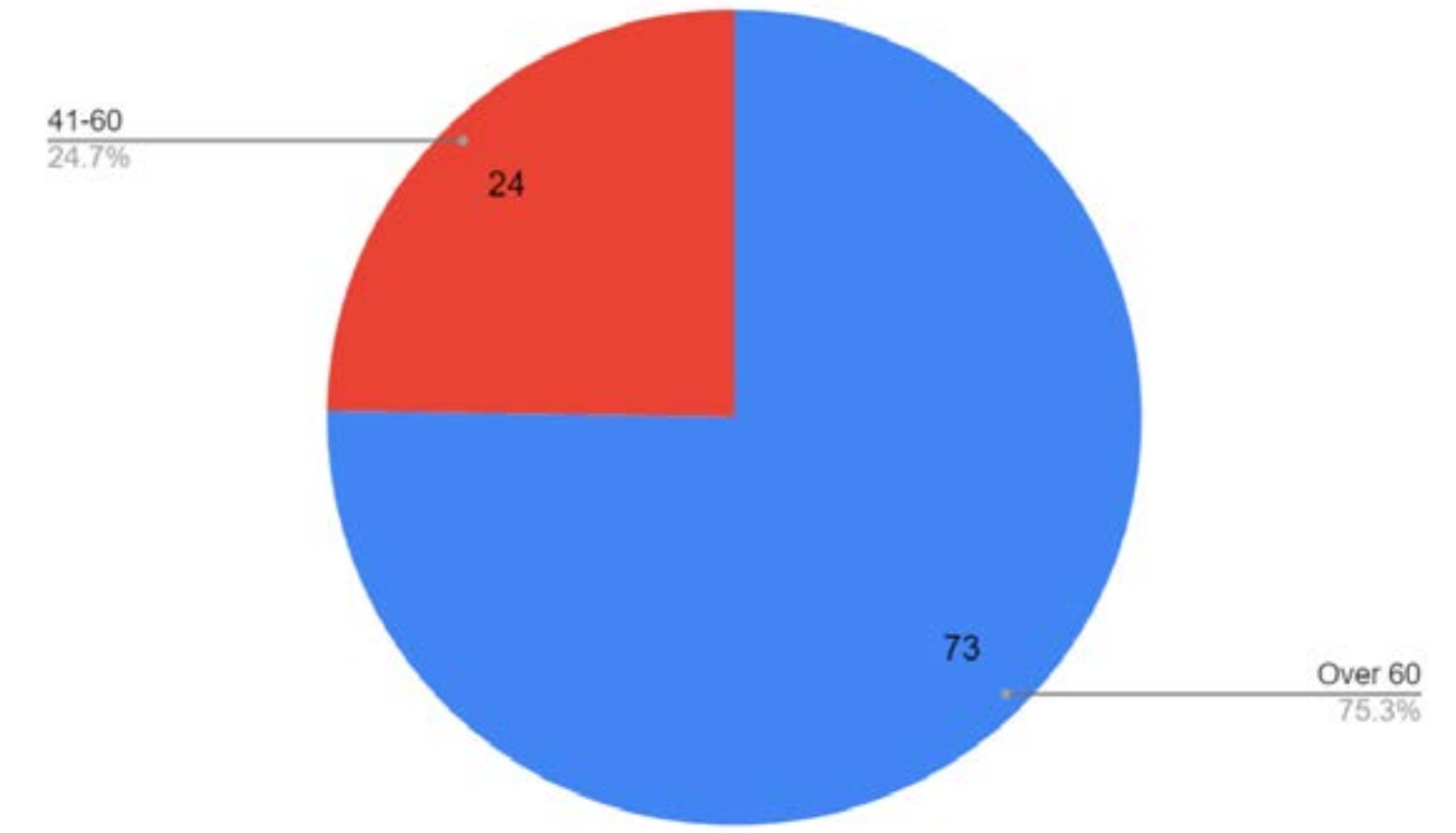
Islamic Education

Mutual Support

Survey Respondent State:



Survey Respondent Age:



Survey Noticings:

Many have great levels of trust

Great Communication around:

Solving of issues

Discussing solutions to trends/future goals for progress

Low Youth engagement & Youth support

Need for mentorship for younger leaders

Collaboration across generations to create create a succession plan

Solid education models:

The Clara Muhammad School Model

The Clara Muhammad Virtual Weekend School Model

Survey Wonderings

What happened to the regularity of Ta’leem service?

Why don’t we have a succession plan in place and clear criteria for Imams?

Ex. Certification process

Why aren’t there more orientation classes for new members within section?

With Community Engagement being so high in the region why the lack of new members?